

SOFTGEL

VEGETARIAN SOFTGEL

TABLET

CAPSULE

GUMMY

POWDER

LIQUID

PERSONAL CARE

PET SUPPLEMENT

CUSTOM FORMULATION

CUSTOM FLAVORING

CUSTOM FINISHING

CUSTOM PACKAGING

MULTIPLE 3RD PARTY

cGMP CERTIFICATIONS



Robinson Pharma[®], Inc.

ONE STOP SUPPLEMENT MANUFACTURER

**9 STATE-OF-THE-ART MANUFACTURING FACILITIES
COMBINED OVER 1 MILLION SQ. FT.**



A MESSAGE FROM THE TEAM

It's an exciting time to be in the health and wellness supplement industry, and there is a great opportunity for growth.

We are proud to introduce you to our company and what we can do for you. At Robinson Pharma, we invest in you, our customer.

In the following pages, you'll get a sense of what we offer, including:

- *A significant range of product types (softgels, tablets, capsules, gummies, powders, and more)*
- *Options for finishing and packaging*
- *Custom formulation and private label*

With more than 30 years of experience, we have become a leader in the industry. We are able to understand your unique challenges and work with you to move your company forward.

We believe that your success is our success.

The Robinson Pharma Team





COMPANY HIGHLIGHTS

- One of the largest supplement contract manufacturing facilities in the U.S.A.
- 9 state-of-the-art manufacturing facilities combined over 1 million sq. ft.
- Industry leader in one-stop contract manufacturer providing solutions from formulations to packaging
- Largest softgel capacity in the U.S.A.
- More than 30 years of experience in nutritional supplement contract manufacturing (est. 1989)
- Over \$50 million of new investment in tablet, capsule, powder, and liquid production
- Multiple 3rd party cGMP certifications
- Comprehensive in-house laboratory
- Fully custom options on packaging





SOFTGEL MANUFACTURING

- 20 billion softgel annual capacity
- State-of-the-art softgel manufacturing facility
- Recent expansions in technology, equipment, and capacity
- Custom formulations available
- More than 100 years of combined expert experience in research & development for softgels
- Continuous drying system to reduce production time
- Enteric coating, clear, or custom colors
- High capacity in vegetarian softgels
- Automated high-speed digital visual inspection system
- Laser etching capability

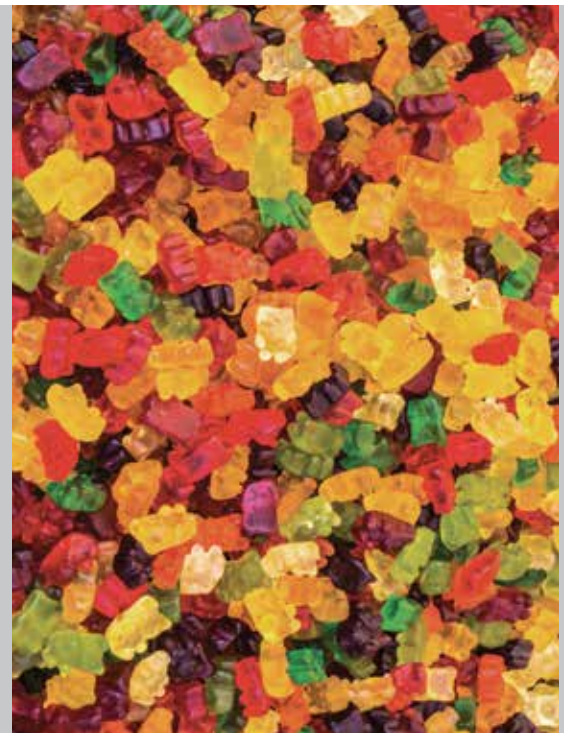




SOLID DOSAGE MANUFACTURING

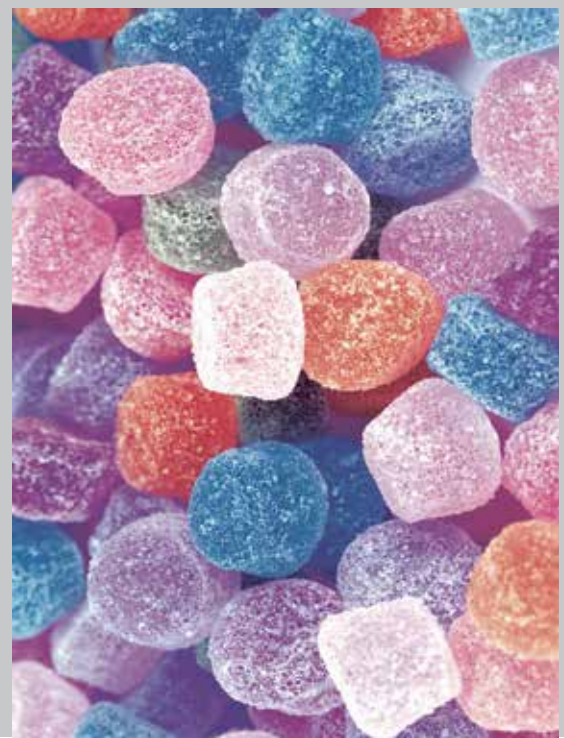
- 14 billion tablets and capsules annual capacity
- Clean label capability for custom formulations
- Custom non-GMO, gluten-free, and vegetarian formulations
- Options for fast-dissolving, ODT, and chewable
- Options for clear, enteric, organic, vegetarian, and flavored coatings
- Wide range of shapes & colors, including smaller size tablets for children
- Custom formulations available





GUMMY MANUFACTURING

- Dedicated US facility for Pectin & Gelatin gummies production
- Gummy Automatic Production System with high-accuracy metering & dosing equipment
- Automatic ingredient weighing & mixing with a capacity exceeding 5,000 kg of finished products per hour
- More than 7 billion gummies per year capacity
- Wide range of gummy shapes, sizes, colors and weight available





POWDER MANUFACTURING



- New expansion to 100,000 metric tons powder annual capacity
- State-of-the-art facility and equipment
- Experienced flavor specialists to help create custom flavors
- NSF GMP Certified Facilities
- Organic certified manufacturing capability
- Numerous private label powder formulas, including protein powders
- Blending Capacities From 5 cu. ft. to three 400 cu. ft. blenders for any size project
- Wide range of packaging options including jars, canisters, pouches, sachets, and stick-packs





LIQUID MANUFACTURING

- Liquid dietary supplements, personal care items, and beauty products, including lotions and creams
- 100 million/year Liquid bottle capacity
- 400 million liquid ampoules annual capacity
- Experienced flavor specialists to help create custom flavors
- Experienced personal care and beauty product formulation experts
- 2 oz. capability and up
- Clean label formulation capability





QUALITY ASSURANCE & QUALITY CONTROL

Robinson Pharma, Inc. utilizes top-of-the-line equipment for developing, sampling, and testing all finished goods. Our more than 100 chemists, engineers, and QA/QC makes use of the latest technology to create unique brands for your business, with a diverse set of quantitative and qualitative capabilities.

Our RPI Quality Control Lab performs physical, analytical, and microbiological testing of raw material and the finished product with a wide variety of equipment that allows us to test 99% of release specifications in-house.

PHYSICAL TESTING

- Disintegration
- Particle Size
- Viscosity
- Color (Gardner Scale)
- Friability
- Microscopic Analysis
- Hardness
- Thickness

ANALYTICAL LAB

- HPLC
- UPLC
- UPLC-MS
- HP-TLC
- GC
- GC-MS
- UV-Vis
- FTIR
- ICP-MS
- ICP-OES
- TOC
- Dissolution
- pH
- Moisture Analysis (Karl Fischer)
- Protein Analysis

MICROBIOLOGICAL LAB

- Conventional & Rapid Micro Detection





INTEGRATED PACKAGING

- One-stop service — create, package, label, and ship
- 130 million bottles annual capacity
- 90 million blisters and cards annual capacity
- Induction sealing, neck banding, and full-body sleeves
- Glass / HDPE / PET bottle types
- Kit boxing options and custom promotional pallet builds for mass retail
- Fully automated robotic bulk packaging system



We accept most custom finishing jobs with various sizes, shapes, colors, and special designs.

SOFTGELS, TABLETS, CAPSULES	Blisters	Cards	Bottles	Multi-Paks	Sachets
GUMMY	Bottles	Glass	Assorted Shapes	Assorted Sizes	Assorted Colors
POWDER	Canisters	Tubs & Containers	Sachets	Stand-Up Pouches	Stick-Packs
LIQUIDS	Ampoules	Glass Bottles	Plastic Bottles	Droppers	Liquid Shots
PERSONAL CARE	Bottles	Bottle Dispensers	Jars	Twist-Offs	Tubes
PET SUPPLEMENTS	Blisters	Bottles	Glass Bottles	Canisters	Droppers

SOFTGEL



OVAL

2 Oval	3 Oval	4 Oval	5 Oval	6 Oval	7.5 Oval	10 Oval	12 Oval	14 Oval	16 Oval	20 Oval
minims: 1.5 - 1.8 cc: 0.092 - 0.111	minims: 2.4 - 3.0 cc: 0.148 - 0.185	minims: 3.1 - 4.0 cc: 0.191 - 0.246	minims: 4.3 - 5.0 cc: 0.265 - 0.308	minims: 5.2 - 6.0 cc: 0.320 - 0.369	minims: 6.2 - 7.5 cc: 0.381 - 0.461	minims: 7.5 - 10.0 cc: 0.461 - 0.615	minims: 8.3 - 12.0 cc: 0.511 - 0.738	minims: 11.4 - 14.0 cc: 0.700 - 0.861	minims: 12.4-16.0 cc: 0.763 - 0.984	minims: 17.0 - 20.0 cc: 1.046 - 1.230

OBLONG

9.5 Oblong	11 Oblong	12 Oblong	14 Oblong	16 Oblong	18 Oblong	20 Oblong	22 Oblong
minims: 7.5 - 9.5 cc: 0.461 - 0.584	minims: 8.5 - 11.0 cc: 0.523 - 0.677	minims: 11.0 - 12.0 cc: 0.677 - 0.738	minims: 12.5 - 14.0 cc: 0.769 - 0.861	minims: 14.5 - 16.0 cc: 0.892 - 0.984	minims: 16.5 - 18.0 cc: 0.892 - 1.107	minims: 18.0 - 20.0 cc: 1.107 - 1.230	minims: 20.0 - 22.0 cc: 1.230 - 1.353

22 Oblong SF	23 Oblong	24 Oblong	26 Oblong
minims: 17.5 - 22.0 cc: 1.076 - 1.353	minims: 19.6 - 23.0 cc: 1.205 - 1.415	minims: 20.0 - 24.0 cc: 1.230 - 1.476	minims: 20.8 - 26.0 cc: 1.279 - 1.599

ROUND

3 Round	6 Round
minims: 2.2 - 3.0 cc: 0.135 - 0.185	minims: 4.6 - 6.0 cc: 0.283 - 0.369

COLOR CHART

**MORE THAN 500
NATURAL & FD&C
COLORS + FLAVORS
AVAILABLE**

IMPORTANT NOTE:
Shapes and colors may vary. Fill weight varies depending on fill material density.

- TITANIUM DIOXIDE
- NATURAL / CLEAR SHELL
- COCONUT / CLEAR SHELL
- METALLIC COLORS
(Custom) FD&C + Candurin®
- TURMERIC
- ANNATTO
- BLUE
FD&C + Titanium Dioxide
- DARK PURPLE
- CARAMEL

SPECIAL SHAPES

4 Tear Drop Snip	6 Tube	8 Heart	8 Twist Off	10 Twist Fish Tail	10 Snip Tube	18 Oval Twist	26 Oblong Twist
			IMAGE NOT AVAILABLE		IMAGE NOT AVAILABLE		IMAGE NOT AVAILABLE
minims: 2.8 - 4.0 cc: 0.172 - 0.246	minims: 4.2 - 6.0 cc: 0.258 - 0.369	minims: 6.0 - 8.0 cc: 0.369 - 0.492	minims: 6.0 - 8.0 cc: 0.369 - 0.492	minims: 7.5 - 10.0 cc: 0.461 - 0.615	minims: 7.5 - 10.0 cc: 0.461 - 0.615	minims: 13.5 - 18.0 cc: 0.830 - 1.107	minims: 20.8 - 26.0 cc: 1.279 - 1.439

CUSTOM SHAPES AND SIZES AVAILABLE

VEGETARIAN SOFTGEL

OBLONG

12 Oblong



minims: 11.0 - 12.0
cc: 0.677 - 0.738

14 Oblong



minims: 12.5 - 14.0
cc: 0.769 - 0.861

16 Oblong



minims: 14.5 - 16.0
cc: 0.892 - 0.984

18 Oblong



minims: 16.5 - 18.0
cc: 0.892 - 1.107

22 Oblong



minims: 20.0 - 22.0
cc: 1.230 - 1.353

22 Oblong SF



minims: 17.5 - 22.0
cc: 1.076 - 1.353

24 Oblong



minims: 20.0 - 24.0
cc: 1.230 - 1.476

26 Oblong



minims: 20.8 - 26.0
cc: 1.279 - 1.599

COLOR CHART

**MORE THAN 25
NATURAL & FD&C
COLORS AVAILABLE**

TITANIUM DIOXIDE

NATURAL / CLEAR SHELL

METALLIC COLORS (Custom)
FD&C + Candurin®

TURMERIC

ANNATTO

BLUE
FD&C + Titanium Dioxide

DARK PURPLE

CARAMEL

OVAL

4 Oval



minims: 3.1 - 4.0
cc: 0.191 - 0.246

6 Oval



minims: 5.2 - 6.0
cc: 0.320 - 0.369

7.5 Oval



minims: 6.2 - 7.5
cc: 0.381 - 0.461

10 Oval



minims: 7.5 - 10.0
cc: 0.461 - 0.615

SNIP

4 Tear Drop
Snip



minims: 2.8 - 4.0
cc: 0.172 - 0.246

IMPORTANT NOTE:

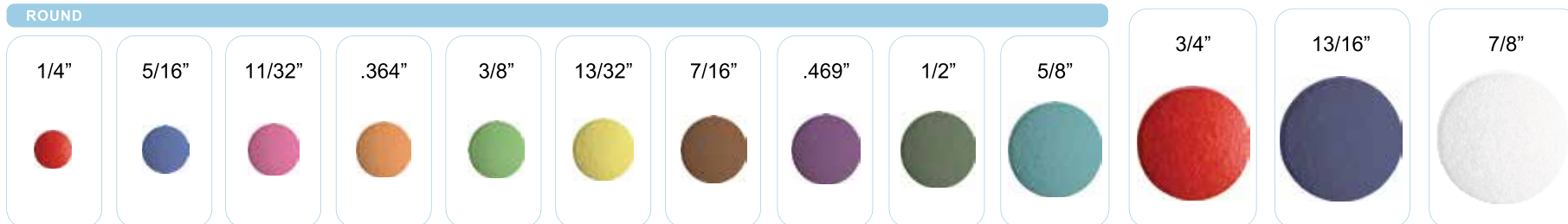
Shapes and colors may vary. Fill weight varies depending on fill material density.

TABLET (Capability range from 100 mg - 4,000 mg)



IMPORTANT NOTE:
Size, shape and color may vary.

ROUND



CAPLET



OVAL



SPECIAL SHAPES



ANIMAL SHAPES

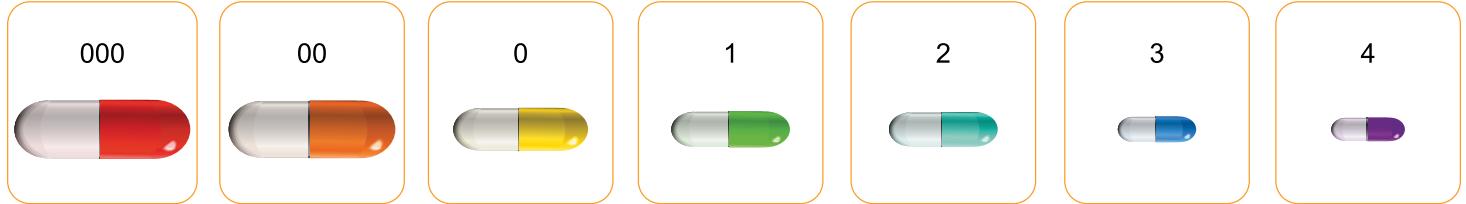


CAPSULE

(Capability range from 20 mg - 1,600 mg)



SIZES



SPECIFICATIONS	CAP Length (mm)	12.01 - 12.95	11.4 - 12.0	10.7 - 11.3	9.50 - 10.1	8.60 - 9.20	7.80 - 8.40	6.90 - 7.50
	CAP Diameter (mm)	9.91	7.63 - 7.77	7.57 - 7.71	6.83 - 6.97	6.28 - 6.42	5.76 - 5.90	5.25 - 5.39
	BODY Length (mm)	20.5 - 22.20	19.8 - 20.4	18.2 - 18.8	16.2 - 16.8	15.1 - 15.7	13.3 - 13.9	11.9 - 12.5
	BODY Diameter (mm)	9.55	7.31 - 7.45	7.26 - 7.40	6.56 - 6.70	6.00 - 6.14	5.50 - 5.64	4.98 - 5.12
	COVERING Length (mm)	25.4	22.2 - 23.2	20.7 - 21.7	18.5 - 19.5	17.0 - 17.8	15.0 - 15.8	13.4 - 14.3
	WEIGHT (mg)	165 ± 7	120 ± 7	97 ± 6	76 ± 6	62 ± 5	50 ± 5	39 ± 5
	WEIGHT GAP	± 6 %	± 6 %	± 6 %	± 6 %	± 6 %	± 8 %	± 8 %

IMPORTANT NOTE:

Size, shape and color may vary.

CUSTOM COLORS AND SIZES AVAILABLE

GUMMIES

THIMBLE

No. 1



19.0 W x 19.0 H x 16.0 D
(Millimeter)

No. 2



17.5 W x 17.5 H x 16.0 D
(Millimeter)

SQUARE

No. 3



19.05 W x 19.05 H x 12.7 D
(Millimeter)

No. 4



17.0 W x 17.0 H x 10.0 D
(Millimeter)

BERRY

No. 5



19.0 W x 19.0 H x 13.3D
(Millimeter)

No. 6



17.1 W x 17.1 H x 14.0 D
(Millimeter)

BEAR

No. 7



16.0 W x 20.5 H x 13.0 D
(Millimeter)

HALF
CIRCLE

No. 8



17.5 W x 17.5 H x 10.0 D
(Millimeter)

No. 9



20.3 W x 20.3 H x 12.0 D
(Millimeter)

STAR

No. 17



19.0 W x 18.3 H x 12.0 D
(Millimeter)

ORANGE

No. 18



16.5 W x 29.1 H x 10.1 D
(Millimeter)

CYLINDER

No. 10



14.0 W x 14.0 H x 10.0 D
(Millimeter)

No. 11



19.4 W x 19.4 H x 12.0 D
(Millimeter)

No. 12



19.4 W x 19.4 H x 12.0 D
(Millimeter)

No. 13



19.0 W x 19.0 H x 9.0 D
(Millimeter)

HEART

No. 14



25.5 W x 25.5 H x 10.0 D
(Millimeter)

No. 15



21.0 W x 21.0 H x 8.0 D
(Millimeter)

No. 16



16.4 W x 16.4 H x 12.0 D
(Millimeter)

COLORS, SIZES, AND SHAPES PICTURED
ARE FOR REFERENCE ONLY

IMPORTANT NOTE:
WIDE RANGE OF GUMMY
SHAPES, SIZES, COLORS
AND WEIGHT AVAILABLE.





Robinson Pharma®, Inc.

ONE STOP SUPPLEMENT MANUFACTURER

**9 STATE-OF-THE-ART MANUFACTURING FACILITIES
COMBINED OVER 1 MILLION SQ. FT.**

WWW.ROBINSONPHARMA.COM

(714) 241-0235 • Email: sales@rpi.inc

3330 S. HARBOR BLVD., SANTA ANA, CA 92704